

- ◆ Very Low PIM
- ◆ 10, 30 & 100W
- ◆ Low VSWR
- ◆ Convenient Size
- ◆ Intimate cable contact
- ◆ IP67 and RoHS compliant
- ◆ For outdoor applications
- ◆ 7-16, N & SMA connectors



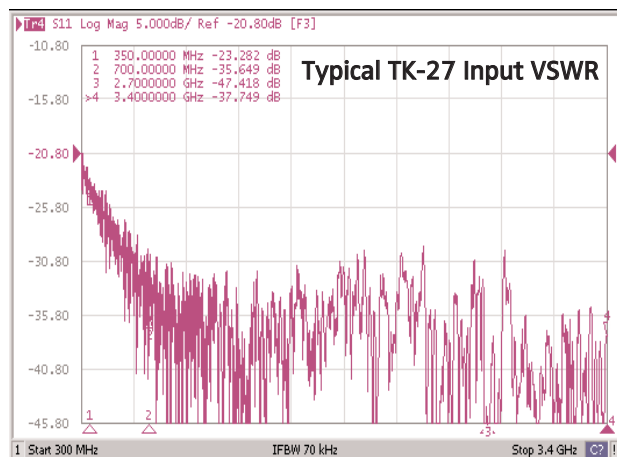
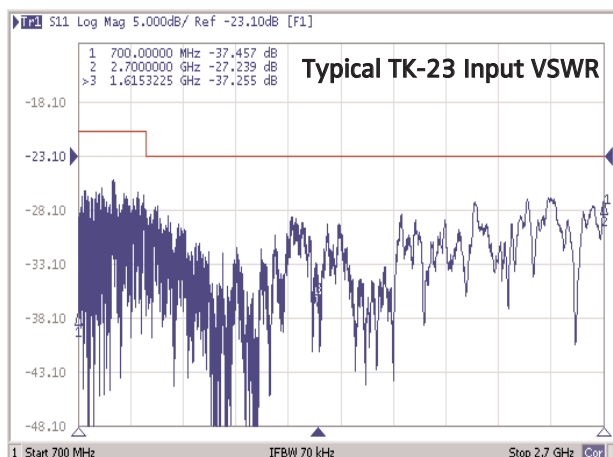
Microlab TK-20 series Cable Loads are intended for wireless applications, when extremely low PIM, Passive Intermodulation, is required. A typical application is in terminating the unused port of a Hybrid Coupler used to combine different wireless signals. This is also offered as a discrete product in the CT series.

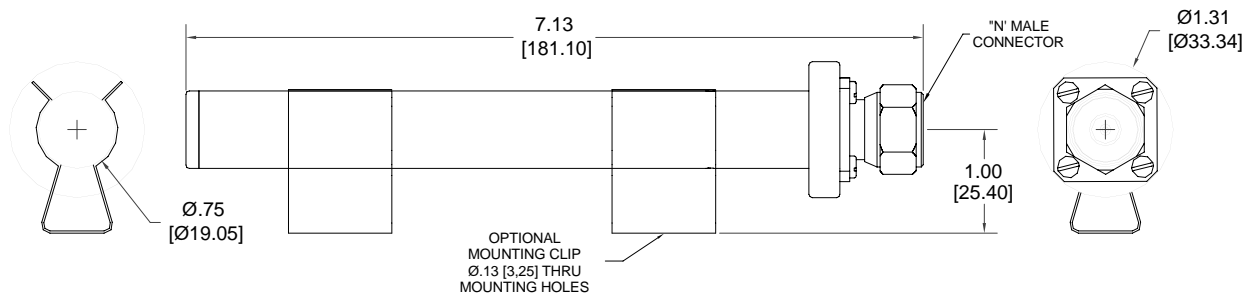
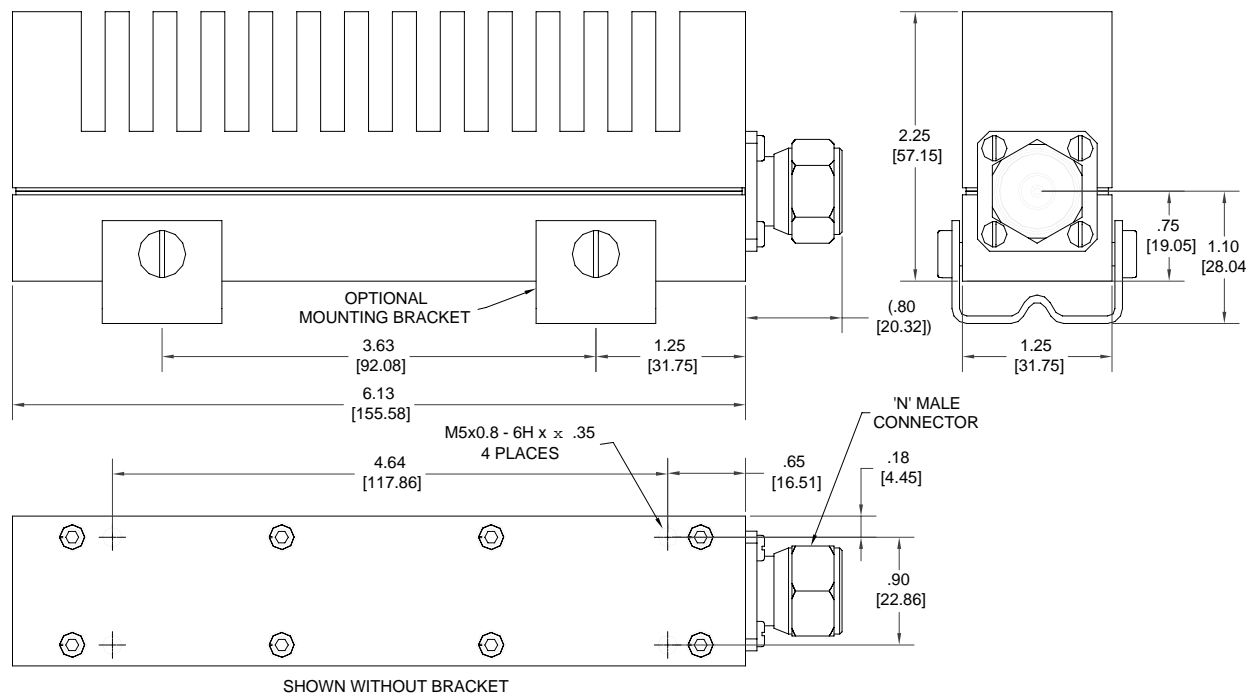
The Cable Terminations for 30W and higher require a finned heat sink to dissipate the heat, similar to that found on resistive loads and assumes an ambient temperature up to +55°C. (06/11)

Frequency: 698 - 2700 MHz
PIM: -165 dBc typ; <-160 dBc with 2 x 20W tones at 25°C
Power Rating: 5 kW peak
Environment: -35 to +55°C ambient, IP67 (except TK-21 for indoor use only)
Surface Temp: +90°C max. (per IEC 60950)
Impedance: 50Ω nom.
Housing Finish: Black paint on aluminum
Connector Finish: Triplate

Power* Rating	Model Number and Connector						VSWR		Weight nom. lb (kg)
	SMA (f)	SMA (m)	N (f)	N (m)	7-16 (f)	7-16 (m)	typ.	max.	
10W avg.	TK-21FF [†]	TK-21MF [†]	TK-21FN	TK-21MN	TK-21FD [†]	TK-21MD [†]	1.10:1	1.20:1	0.35 (0.16)
30W avg.	-	-	TK-23FN	TK-23MN	-	-	1.10:1	1.20:1	1.45 (0.66)
100W avg.	TK-27FF	-	TK-27FN	TK-27MN	TK-27FD	TK-27MD	1.10:1	1.15:1	5.55 (2.50)

*Derate Average Power by -1.2%/°C above 55°C ambient [†]SMA and 7-16 versions made to order



TK-21MN (10W)

TK-23MN (30W)


TK-27MN (100W)
